

Wexiödisk^W

PRE-RINSE MACHINE WD-PRM60 and WD-PRM90

(translation of the original documentation)



Read the manual before using the machine!

Installation and user manual



1. General instructions	1
1.1 Symbols used	2
1.2 Machine rating	3
1.3 Checking that the machine and manual correspond	3
1.4 EU Declaration of Conformity	4
 2. Safety instructions	 5
2.1 General information	5
2.2 Transport	6
2.3 Installation	6
2.4 Operation	6
2.4.1 Risk of crushing	6
2.4.2 Risk of slipping	6
2.4.3 Sounds	6
2.5 Cleaning the machine	6
 3. Installation instructions	 7
3.1 General information	7
3.2 Requirements for the installation site	7
3.2.1 Lighting	7
3.2.2 Ventilation	7
3.2.3 Power supply	8
3.2.4 Water	8
3.2.5 Drain/waste pipe	8
3.2.6 Space for servicing	8
3.3 Transport and storage	9
3.4 Unpacking	9
3.5 Installation	10
3.5.1 Preparing for the installation	10
3.5.2 Positioning the machine	10
3.6 Connections	11
3.6.1 WD-PRM60	11
3.6.2 WD-PRM90	12
3.6.3 Retro-fitting of WD-PRM60/90	13
3.6.4 Electrical connection	14
3.6.5 Water connection	14
3.6.6 Ventilation	14
3.6.7 Drain/waste pipe	14
3.7 Splashback plates	15
3.8 Setting / adjustment of flows	15

3.9 Installation and connection of auxiliary equipment and options	16
3.9.1 Conveyors and sinks	16
3.9.2 WD-PRM60	17
3.9.3 WD-PRM90	19
3.9.4 Switch for raised wash basket (option)	19
3.9.5 Rinse cleaning of PRM (option)	20
3.9.6 Conveyors	20
3.10 Trial operation	21
3.10.1 Commissioning protocol	21
3.11 Documentation	22
4. Operating instructions	23
4.1 Prior to use	24
4.1.1 The machine's design, WD-PRM60	24
4.1.2 The machine's design, WD-PRM90	25
4.1.3 Preparations before filling	26
4.1.4 Filling the machine	27
4.2 Using the machine	27
4.2.1 Positioning of dishware in baskets	27
4.2.2 Pre-rinse	28
4.2.3 Stopping the machine during operation	28
4.3 After use – Cleaning	29
4.3.1 Incorrect cleaning methods	29
4.3.2 Emptying	29
4.3.3 Daily cleaning	30
4.3.4 Weekly cleaning	31
4.4 Operating problems	32
4.4.1 Troubleshooting	32
5. Technical specifications	33

1. General instructions

Read the instructions in this manual carefully as they contain important information regarding the correct, effective and safe installation, use and servicing of the machine. Service personnel should have access to all documentation for the machine.

Keep this manual in a safe place so that it can and should be used by other operators of the machine.



- The machine can only replace manual rinsing of items. Other uses are NOT recommended!
- The machine can be equipped with a number of different options. Certain options may be standard in a number of countries. Check what your machine is equipped with.
- The capacity requirements of the machine can be found in the TECHNICAL DATA chapter.
- The electronics in the machine are RoHS compatible.

Before the machine is started up and used, the following points should be observed:



- The SAFETY INSTRUCTIONS chapter must be studied carefully before commissioning the machine.
- Installation of the machine must be performed in accordance with the requirements and instructions indicated in the INSTALLATION INSTRUCTIONS and TECHNICAL SPECIFICATIONS chapters.
- Any personnel who may at some point use the machine must be trained in its operation, use and care.
- The machine should not be used by anyone suffering from a physical or mental illness.
- A close eye should be kept on any children in the vicinity of the machine to ensure they do not tamper with it.
- All cover plates must be installed during use.



The machine and equipment requires an annual service. Contact one of our authorised and trained service companies for such a service.

General instructions

1.1 Symbols used



This symbol warns of situations where a safety risk may arise. The instructions given should be followed in order to prevent injury and dangerous situations.



This symbol on a machine part warns of electrical equipment. The machine must be entirely non-live during servicing, turn off the power at the power switch and if required, the switch should be locked to prevent unintentional operation. The component may only be removed by a qualified electrician.



This symbol warns that the machine's electronics are sensitive to electrostatic discharge (ESD), which is why a static electricity wristband must be used when handling the electronics at all times.



This symbol explains the right way to perform a task in order to prevent poor results and/or damage to the machine.



This symbol identifies recommendations and hints to help you get the best results when washing, to increase the machine's lifespan and reduce the risk of emergency shutdown.



This symbol explains the importance of careful and regular cleaning of the machine to meet hygiene requirements.



This symbol warns of the importance to read the manual before using the machine.



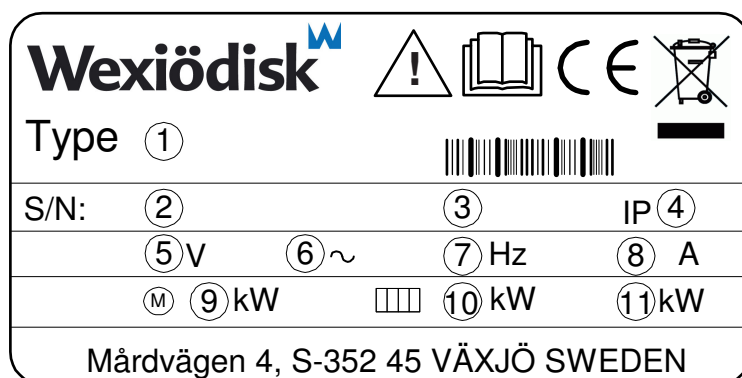
This symbol warns that local regulations must be followed for recycling of packaging etc. as well as the destruction of the machine.



This symbol shows where any earth cable for potential equalisation can be connected. The earth bolt is placed on the machine's stand.

1.2 Machine rating

The machine has two rating plates, one of which is placed at the bottom of one side of the machine and the other in the electrical cabinet. The technical information on the plates is also included on the machine's wiring diagram. The various rating fields show:

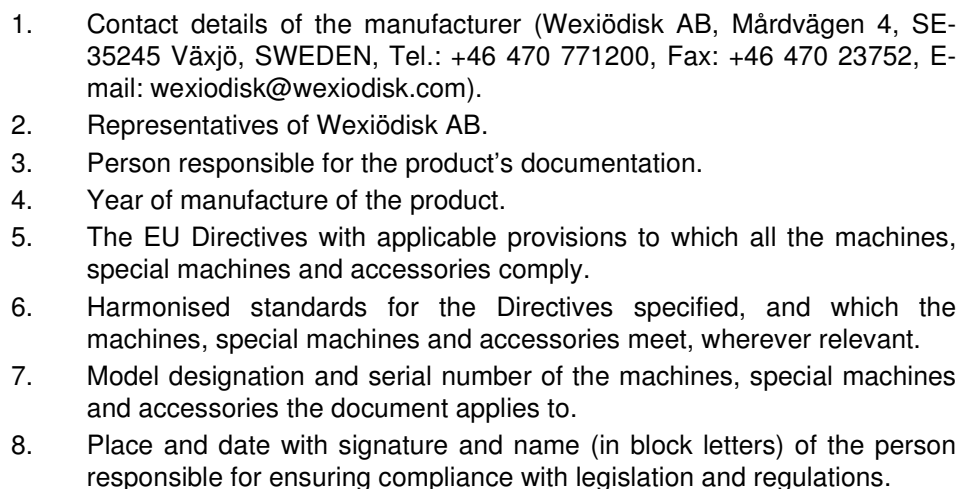


1. Machine type
2. Machine serial number
3. Year of manufacture
4. Enclosure protection class
5. Voltage
6. Number of phases with or without neutral
7. Frequency
8. Main fuse
9. Motor output
10. Electrical heating output
11. Max. output

1.3 Checking that the machine and manual correspond

Check that the type description on the rating plate corresponds with the type description on manual cover page. If manuals are missing, it is possible to order new ones from the manufacturer or the local distributor. When ordering new manuals, it is important to quote the machine number found on the rating plate.

A so-called EU Declaration of Conformity is provided on delivery of the machine.



2. Safety instructions



Read the chapter GENERAL INSTRUCTIONS carefully before starting work.

2.1 General information



The machine is CE marked, which means that it complies with the requirements of the EU Machinery Directive with regard to product safety. Product safety means that the design of the machine will prevent personal injury or damage to property. The CE mark is only valid for an unmodified machine. Any damage to the machine arising from failure to follow the instructions will invalidate the supplier's warranty and product liability.



Installation, repairs and servicing must be performed by an authorised engineer in accordance with local and national rules in effect for such work with water and drainage systems, electricity, ventilation and steam. We recommend that the work is performed by the manufacturer or one of the manufacturer's authorised service companies.

To further improve safety during installation, operation and servicing, the operator and the personnel responsible for installing and servicing the machine should read the safety instructions carefully.



The machine's electronics are sensitive to electrostatic discharge (ESD), which is why a static electricity wristband must be used when handling the electronics at all times.

Before the machine enters service, ensure that the personnel are given the necessary training in handling and looking after the machine.

In order to avoid dangerous situations, the following must be followed:



- Switch off the machine immediately in the event of failure or malfunction.
- Make sure the machine is non-live before removing the cover plate. Turn off the power using the power switch. If required, the switch must be locked to prevent unintentional operation.
- Shut off the tap for incoming water and drain the machine's tank(s) before starting work. Allow the machine to cool.
- The machine and equipment requires an annual service. The machine should be serviced by a person authorised or trained to do so by us. Use original spare parts.
- Warranty repairs must be performed by an authorised company. Contact an authorised service company to draw up a programme of preventive care and maintenance. For authorised service companies, please see www.wexiodisk.com or contact Wexiödisk AB.
- The regular checks described in the manual must be carried out in accordance with the instructions.

Safety instructions

2.2 Transport



Handle the machine with care during unloading and transport; there is a risk of it tipping over. Never lift or move the machine without using the wooden packaging to support the stand.

2.3 Installation



- The machine is designed for quick electrical installation.
- The machine must be connected to a lockable main switch.
- Make sure that the mains voltage is the same as that indicated on the machine's rating plate.



For increased safety, it is recommended to equip the installation with a ground fault circuit interrupter.

2.4 Operation



Be very careful around the machine when it is in operation.

2.4.1 Risk of crushing



- The machine, and any equipment, has moving parts before, during and after washing. Be careful therefore to avoid crushing injuries.
- Movement through the machine continues even if a door is opened. An interlocking function for the feed and the door may be connected if required for WD-PRM60/90 (see the machine's wiring diagram).

2.4.2 Risk of slipping



The floor should be kept clean and dry to eliminate any risk of slipping. Mop up any water and leftover food that has been spilt.

2.4.3 Sounds



The machine is not silent during operation, see TECHNICAL SPECIFICATIONS. Hearing protection may therefore need to be used.

2.5 Cleaning the machine



The water in the tank has a temperature of approximately 60°C and contains detergent. Be careful when draining and cleaning the wash tank. Wear protective gloves and safety glasses and have an eyebath within easy access.

3. Installation instructions



Read the chapters GENERAL INSTRUCTIONS and SAFETY INSTRUCTIONS carefully before starting work.

3.1 General information



Read these instructions carefully, as they contain important information regarding the correct installation method.

- The instructions should be used together with the machine's wiring diagram. Wiring diagrams for the dishwasher to be connected should also be available. These can be found in the electrical cabinet for the respective machines.
- The machine can be equipped with a number of different options. Certain options may be standard in a number of countries. Check what your machine is equipped with.
- If holes need to be drilled in the machine, the holes must be fitted with an edge strip or similar protection.

3.2 Requirements for the installation site

3.2.1 Lighting

In order to ensure the best possible working conditions during installation, operation, servicing and maintenance, make sure that the machine is installed in a well-lit room.

3.2.2 Ventilation

The machine produces heat and steam when in operation. In order to ensure the best possible working conditions, a certain air renewal rate is required in the dishwashing room. The ventilation requirements for the dishwashing room are to be dimensioned on the basis of the applicable standards.

Installation instructions

3.2.3 Power supply

Power supply connections are made by qualified personnel in a way that complies with local and national regulations. The machine's capacity requirements are stipulated in TECHNICAL SPECIFICATIONS.

3.2.4 Water

Water connections are made by qualified personnel in a way that complies with local and national regulations. The machine's capacity requirements are stipulated in TECHNICAL SPECIFICATIONS.

3.2.5 Drain/waste pipe

There must be a waste pipe with an effective trap for the machine's waste water and for water used for rinse cleaning. The machine's capacity requirements for drainage are stipulated in TECHNICAL SPECIFICATIONS.

3.2.6 Space for servicing

A 1-metre area should be left clear in front of the machine for servicing purposes. Depending on if the machine has different accessories, there may also be such a requirement at the infeed and outfeed ends as well as above the machine.

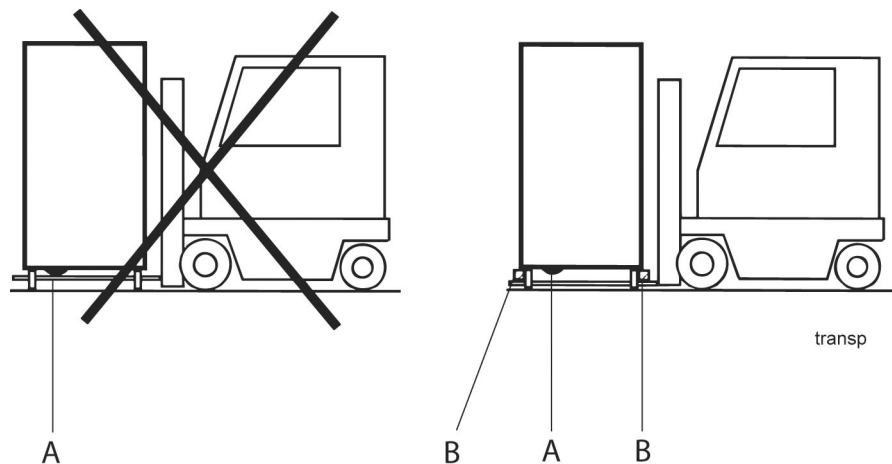
Installation instructions

3.3 Transport and storage

Always transport the machine in an upright position.



Take care during transport, as there is a risk of tipping. NB: The machine must not be transported without a pallet or other support. Some form of support beam must always be used along the sides of the machine during transport. Otherwise the machine may become damaged. When transporting the machine without a normal wooden pallet, always check that none of the components underneath the machine can be damaged.



A = Pumps

B = Spacers



If the machine is not being installed immediately, it must be stored in a frost-free area where the air is dry.

3.4 Unpacking

Check that all parts have been delivered by comparing them with the delivery note.

Remove the packing material. Inspect the machine for any transport damage.



Packaging must be sent for destruction or recycling in accordance with local regulations.

3.5 Installation

3.5.1 Preparing for the installation

Check that there is sufficient room for the machine at the installation location.



- Check that correct connections are available for water, electricity, drainage and possibly steam at the installation location. See TECHNICAL SPECIFICATIONS.

3.5.2 Positioning the machine

Check the following points before the machine is placed in position:



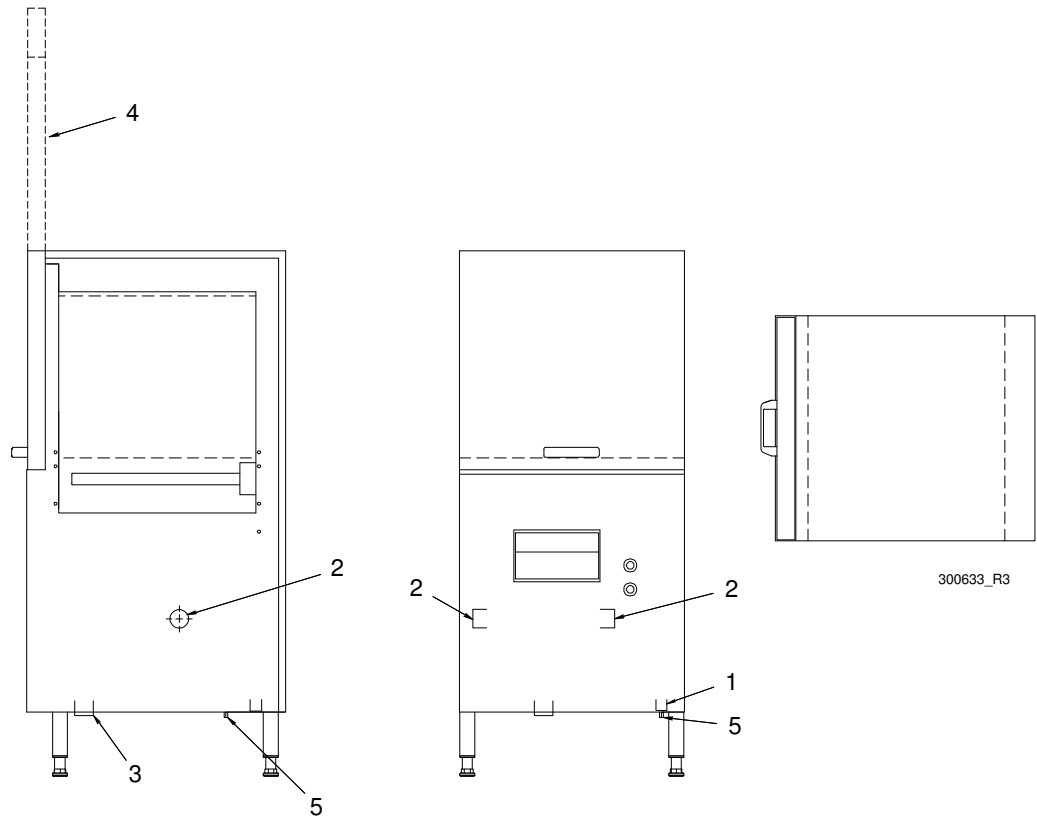
- Check that the fuse for the machine at the site is off, blocked and that outgoing electrical circuits from the machine are non-live.
- Remove the protective plastic on the sides which are to be stood against a wall.
- The distance between the wall and machine should be at least 20 mm.

Place the machine in position and check that it, and any accessories, are horizontally level. Place the spirit level on the join between the machine tank and the upper part. Adjust the height with the legs. Once the machine has been filled with water, do another check to make sure the machine is standing level.

Installation instructions

3.6 Connections

3.6.1 WD-PRM60

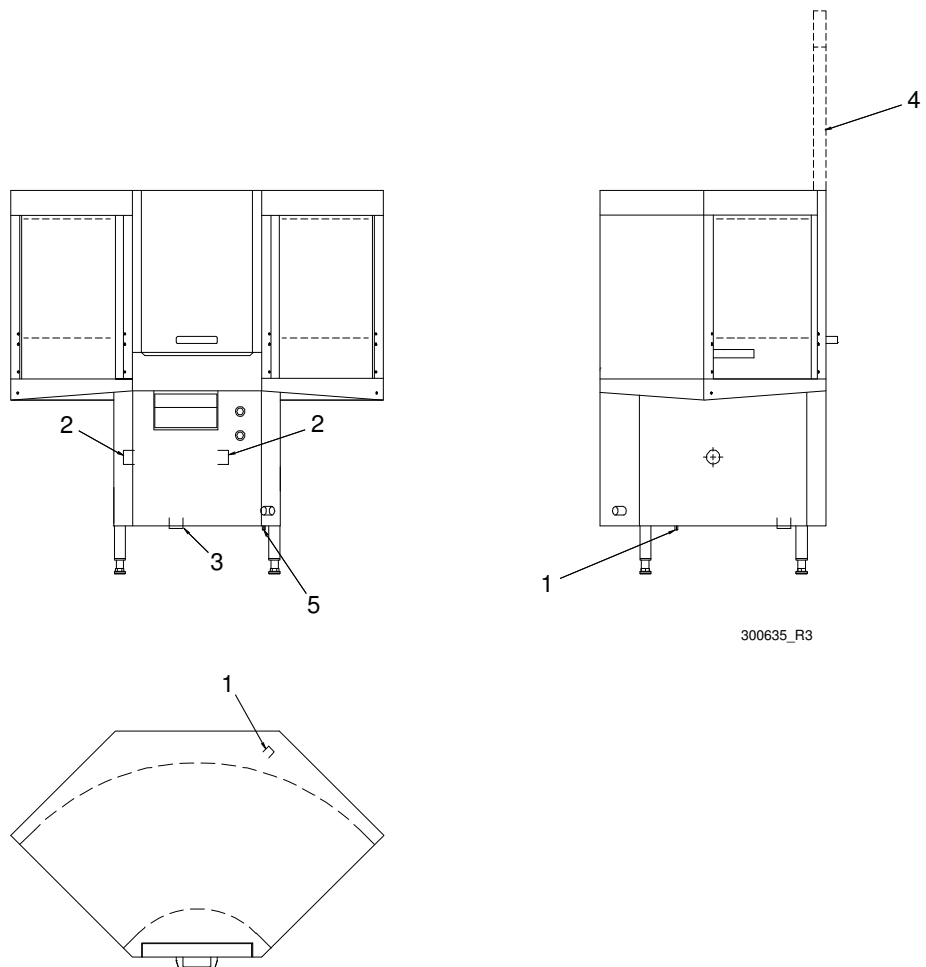


1. Electrical connection
2. Water connection from dishwasher
3. Drain/waste pipe
4. Door (open position)
5. Separate water connection (option)

In the following chapter, figures are given in brackets to clarify what needs to be done. These numbers refer to image and list above.

Installation instructions

3.6.2 WD-PRM90



1. Electrical connection
2. Water connection from dishwasher
3. Drain/waste pipe
4. Door (open position)
5. Separate water connection (option)

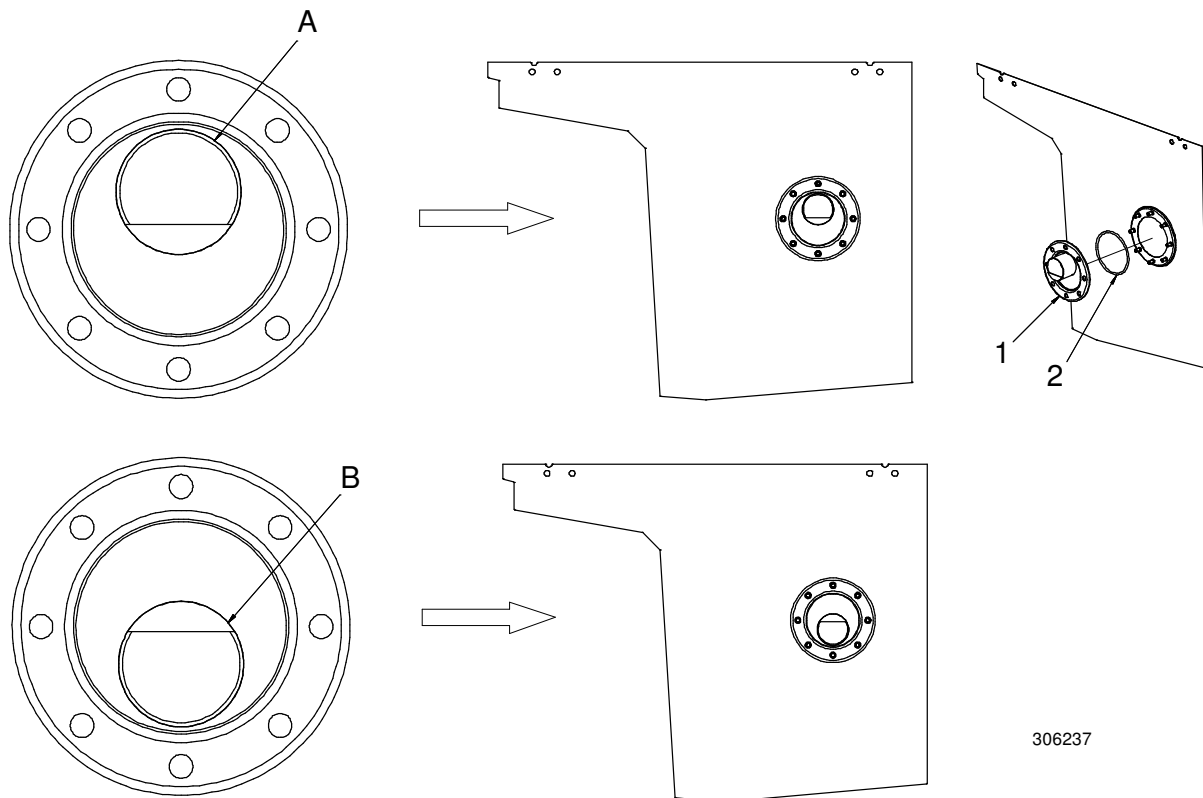
In the following chapter, figures are given in brackets to clarify what needs to be done. These numbers refer to image and list above.

Installation instructions

3.6.3 Retro-fitting of WD-PRM60/90



Jumper X20 in the dishwasher (see the dishwasher's wiring diagram) must be removed when retro-fitting WD-PRM60/90 to an existing dishwasher.



A=The connection must face upwards for WD-151E and WD-153

B=The connection must face downwards for WD-211E - WD-421E and WD-213 - WD-423

1. Tank washer
2. O-ring

Installation instructions

3.6.4 Electrical connection

Information about electrical connections is available on the machine's wiring diagram which is provided on delivery. Store the diagrams in the plastic pocket, located in the electrical cabinet, even after installation.



- The machine is designed for quick electrical installation.
- The machine must be connected to a lockable main switch. This should be placed on a wall, well-protected from water and from the steam which escapes when the machine is opened. The machine is supplied with the electrical cable connected (1).
- Power can also be supplied to the machine via a connected dishwasher (option).

After completing the installation, switch on the main switch and all circuit breakers.

3.6.5 Water connection



- The dishwasher fills with water (2) via the rack conveyor machine that the WD-PRM60/90 is connected to.
- The machine can be fitted with a separate water connection (5) as an option for filling the tank. A shut-off valve must then be installed.
- If you have the Rinse cleaning of PRM function (option), the separate water connection to it is used. Hot water must be used in this case.

3.6.6 Ventilation

The machine's heat load for the room is stipulated in TECHNICAL SPECIFICATIONS.

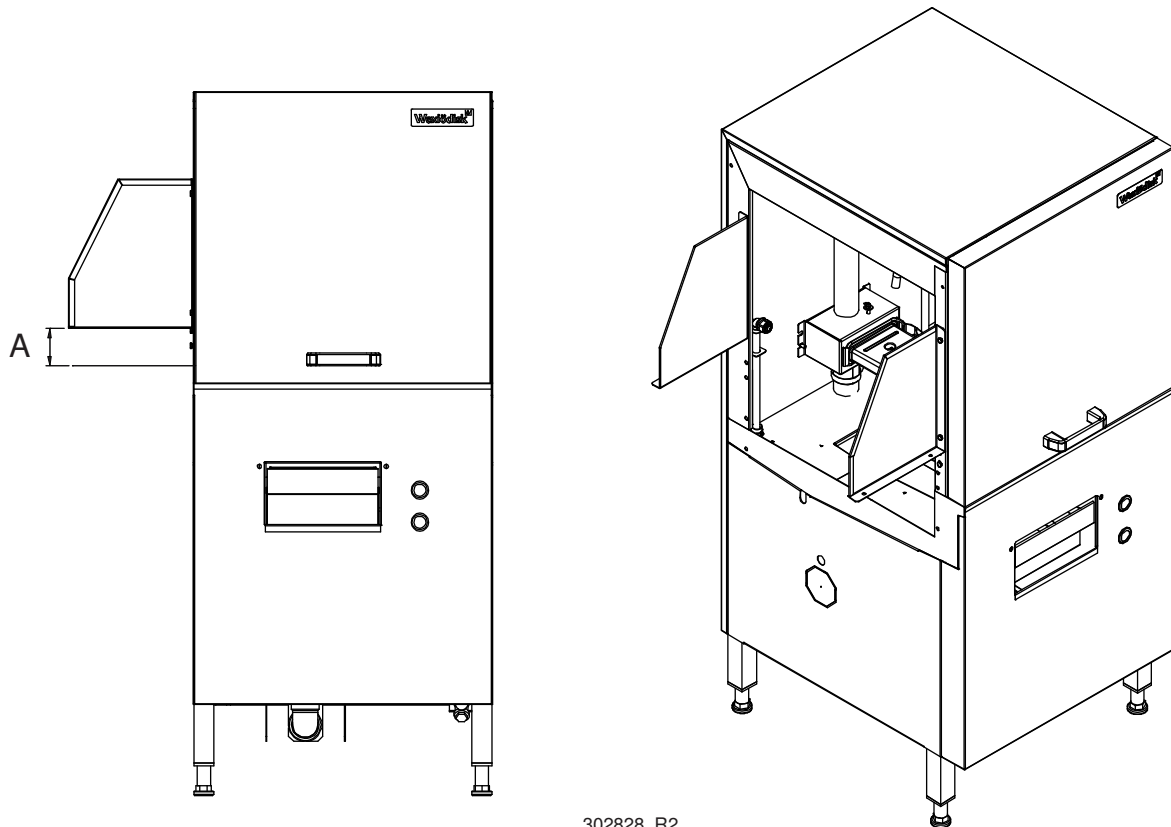
3.6.7 Drain/waste pipe

The waste water system connected to (3) should consist of a 50 mm metal pipe that will withstand mechanical impacts. The drain must run to a floor drain, where its opening must be above the water level.

Ensure that the drain connection is kept in place by using e.g. cable ties in the designated areas.

3.7 Splashback plates

Splashback plates come with the WD-PRM60 These are mounted as and when necessary on the feed side and thereby prevent water splashing onto the sides.



302828_R2

A = The height is adjusted so that it fits the connecting table.

3.8 Setting / adjustment of flows

This is described in the service manual in the chapter ADJUSTMENT INSTRUCTIONS.

3.9 Installation and connection of auxiliary equipment and options

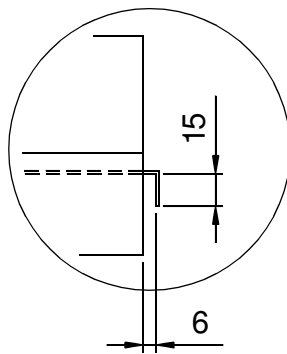


- Once the machine is in place and has been adjusted horizontally and vertically, the auxiliary equipment can be fitted.

The various options normally place no specific requirement on the installation.

3.9.1 Conveyors and sinks

Conveyors and sinks can securely be hooked to the upper edge of the tank.



300730_R1a

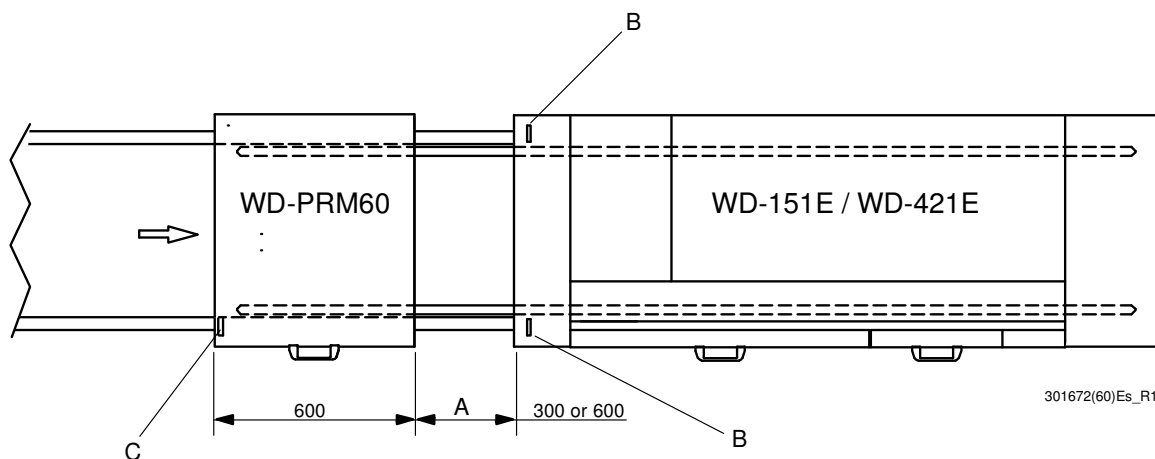
Detail of sink cover

The connection profile must look like the one shown in the drawing. The distance of 6 mm may be reduced, but must not be less than 3 mm.

Use a spirit level to check that the sinks are horizontal and adjust the height, if necessary.

3.9.2 WD-PRM60

Adapted for bar-fed unit (WD-151E - WD-421E)



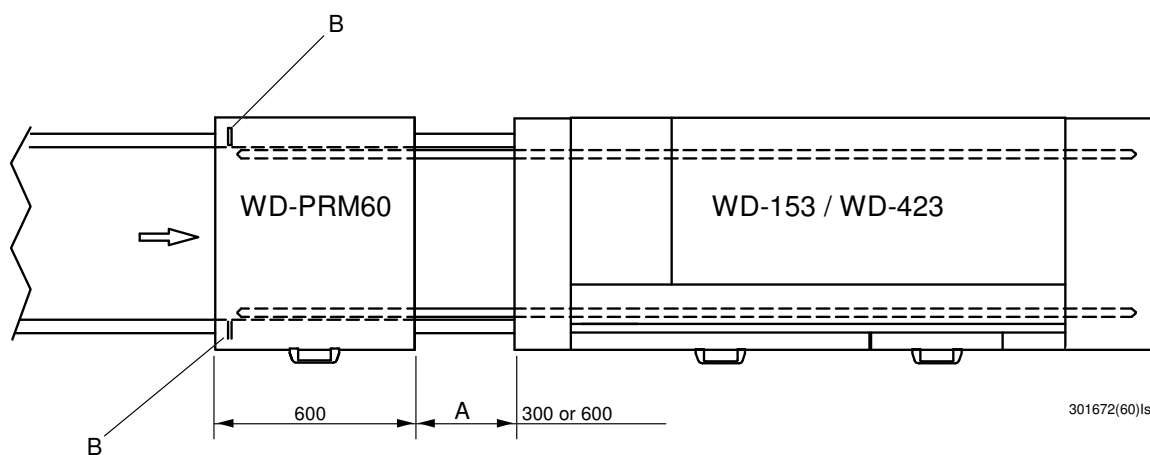
A = Bar feeder. Order separately and then it will be included in the delivery.

B = Photocell

C = Photosensor

The machine must be in E-mode, which is standard; see the relevant wiring diagram.

Adapted for bar-fed unit (WD-153 - WD-423)



A = Bar feeder. Order separately for this to be included in the delivery.

B = Photocell

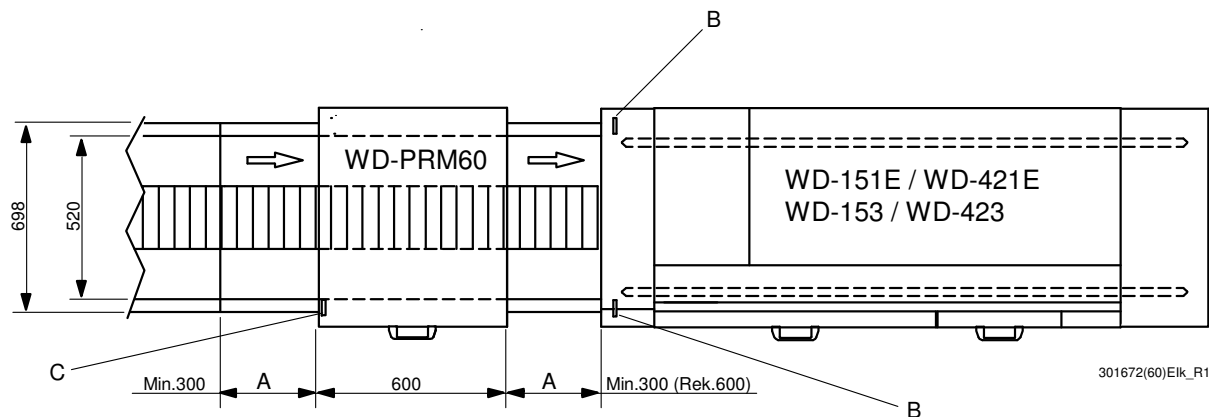
The photocell (B) must be moved from the machine to the infeed on WD-PRM60.

The machine must be in D-mode; see the relevant wiring diagram.

The reference value for "Corner-feed distance" must be adjusted according to the machine's reference table.

Installation instructions

Adaptation for chain conveyor (WD-151E - WD-421E, WD-153 - WD-423)



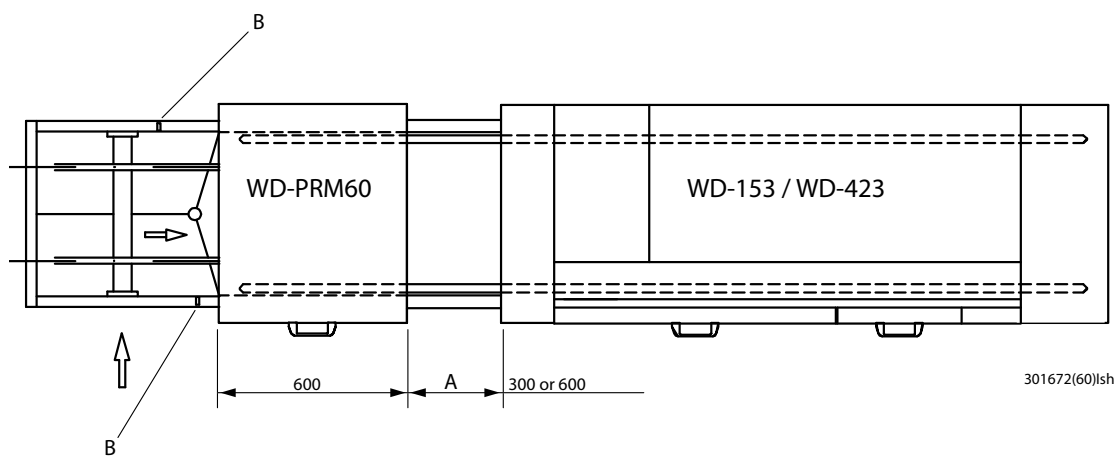
A = Chain conveyor. Not included in the delivery, order separately.

B = Photocell

C = Photosensor

The machine must be in E-mode, which is standard; see the relevant wiring diagram.

Adapted for bar-fed corner feed unit (WD-153 - WD-423)



A = Bar feeder. Order separately for this to be included in the delivery.

B = Photocell

The photocell (B) must be moved from the machine to the infeed on WD-PRM60.

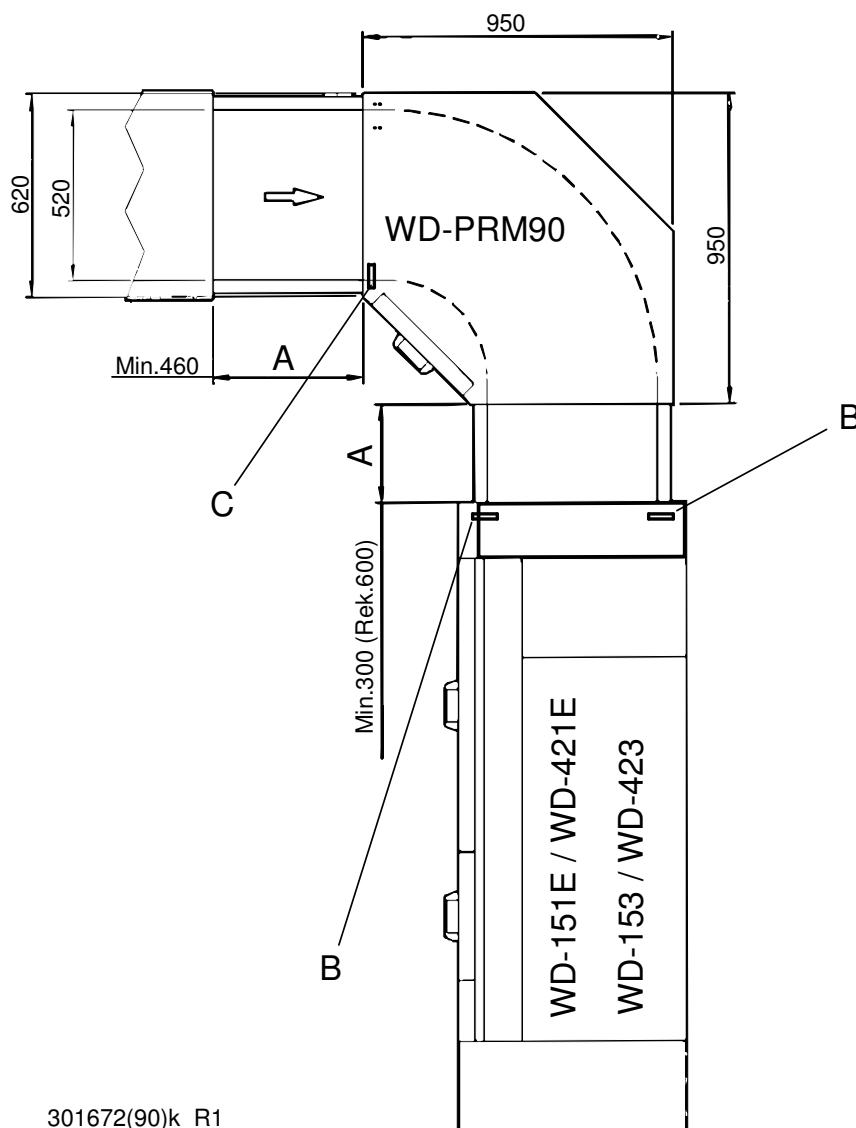
The machine must be in D-mode; see the relevant wiring diagram.

DIP switch 3 on the machine's electronics card must be set to the ON position.

The reference value for "Corner-feed distance" must be adjusted according to the machine's reference table.

3.9.3 WD-PRM90

Adaptation for chain conveyor (WD-151E - WD-421E, WD-153 - WD-423)



A = Chain conveyor. Not included in the delivery, order separately.

B = Photocell

C = Photosensor

The machine must be in E-mode, which is standard; see the relevant wiring diagram.

3.9.4 Switch for raised wash basket (option)

If the machine is fitted with this alternative, there must be a switch for the operation of the pump when a wash basket with an extension frame passes.

Installation instructions

3.9.5 Rinse cleaning of PRM (option)



If the machine is fitted with this alternative, a separate hot water connection is needed (5)

3.9.6 Conveyors



If motor-powered conveyors are connected to the dishwasher, the supplier's assembly instructions for these must be followed.

Installation instructions

3.10 Trial operation

Prepare the machine for trial operation with the help of OPERATING INSTRUCTIONS. The instructions describe the measures that must be taken to prepare the machine for operation.

3.10.1 Commissioning protocol

This should be completed when the machine is started up and used.

Machine type:
Machine serial number:
Installation date:

Read the installation and user manuals carefully. Then check the following points:

1. Check:

- Water and drain connections
- That the machine is evenly balanced
- The filter and level pipe are in place
- That the machine starts in the correct "mode"
NB! see the relevant wiring diagram
- That the relevant reference values in the rack conveyor machine have been adjusted as necessary.

2. Filling the machine:

- Turn on the main switch (on the rack conveyor machine)
- Close the door.
- Press the ON/OFF button
- Fill the machine with water in accordance with the manual

3. Start the machine:

- Check the pump's direction of rotation
N.B.! If the direction of rotation is wrong, the phase must be inverted on the lockable main switch

4. Check the adjustable reference values:

- All the reference values are set to the recommended values on delivery.

5. Run a number of baskets complete with loads and check that:

- There are no water leaks
- The door switch works

Installation instructions

6. Final check: Empty the machine and turn off the power using the main switch.

- Re-tighten all connections on contacts and any circuit breakers
- Set all the circuit breakers to the ON position
- Display the maintenance instructions supplied with the machine

7. Train and inform personnel concerning:

- Rinsing
- Care (daily, weekly and other frequencies)
- Recommendation for annual service

3.11 Documentation



For correct use and servicing, it is essential that the documentation accompanying the machine is made available to personnel who will be using the machine. The installation and user manual, which describes handling and care among other things, should be stored near the machine.

4. Operating instructions



Read the chapters GENERAL INSTRUCTIONS and SAFETY INSTRUCTIONS carefully before starting work.



This chapter describes what must be done with the machine:

- Prior to use
- Regarding the way in which the machine should be used
- Following use
- In connection with troubleshooting

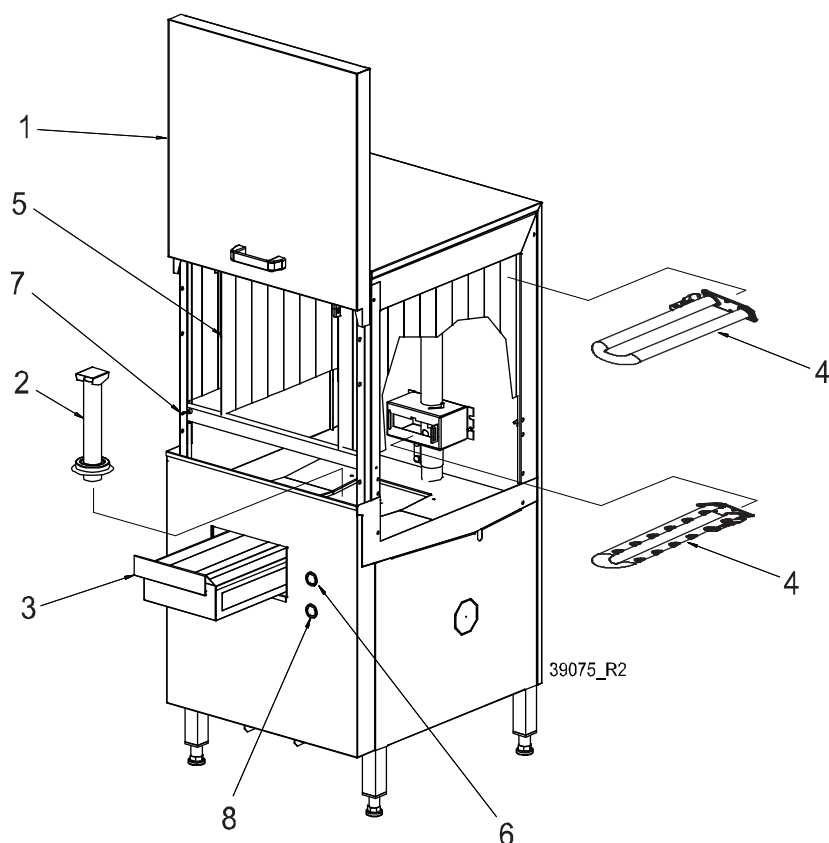
The use of the machine is dependent on how the machine is equipped.



If the machine will not be used for a longer period, the power to the machine should be turned off using the power switch, the water supply turned off and machine should be left open.

4.1 Prior to use

4.1.1 The machine's design, WD-PRM60



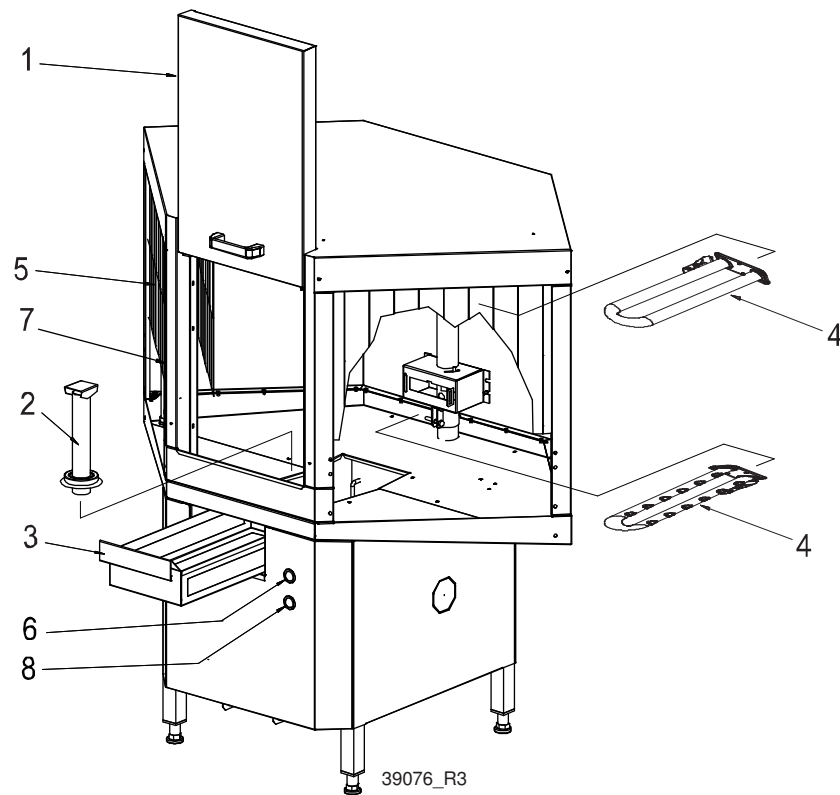
WD-PRM60

1. Door (removable)
2. Level pipe
3. Filter
4. Wash arms, x 2 (removable)
5. Curtain, x 4
6. ON/OFF push button with green indicator light
7. Photocell, infeed
8. Pushbutton with white indicator light for Rinse cleaning of PRM (option), or Cleaning PRM with wash tablet (option)

In the following chapter, figures are given in brackets to clarify what needs to be done. These numbers refer to image and list above.

Operating instructions

4.1.2 The machine's design, WD-PRM90



WD-PRM90

1. Door (removable)
2. Level pipe
3. Filter
4. Wash arms, x 2 (removable)
5. Curtain, x 4
6. ON/OFF push button with green indicator light
7. Photocell, infeed
8. Pushbutton with white indicator light for Rinse cleaning of PRM (option), or Cleaning PRM with wash tablet (option)

In the following chapter, figures are given in brackets to clarify what needs to be done. These numbers refer to image and list above.

4.1.3 Preparations before filling

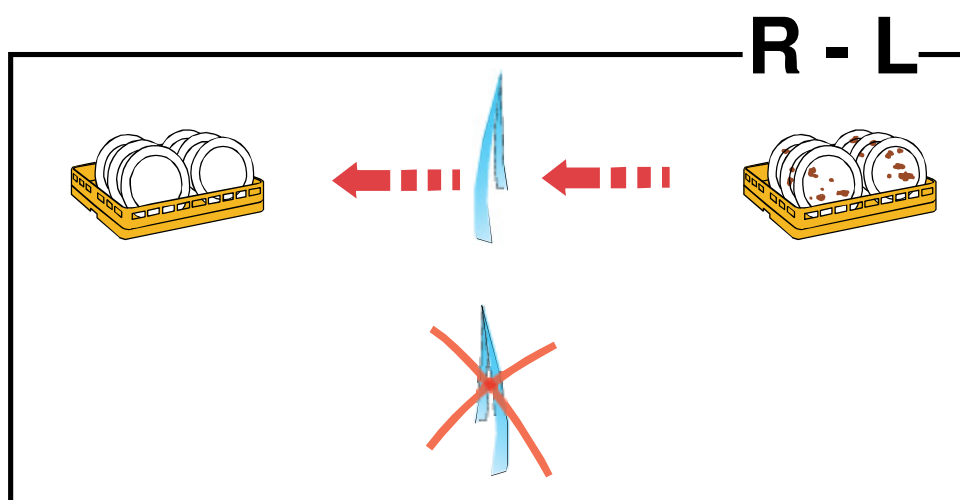
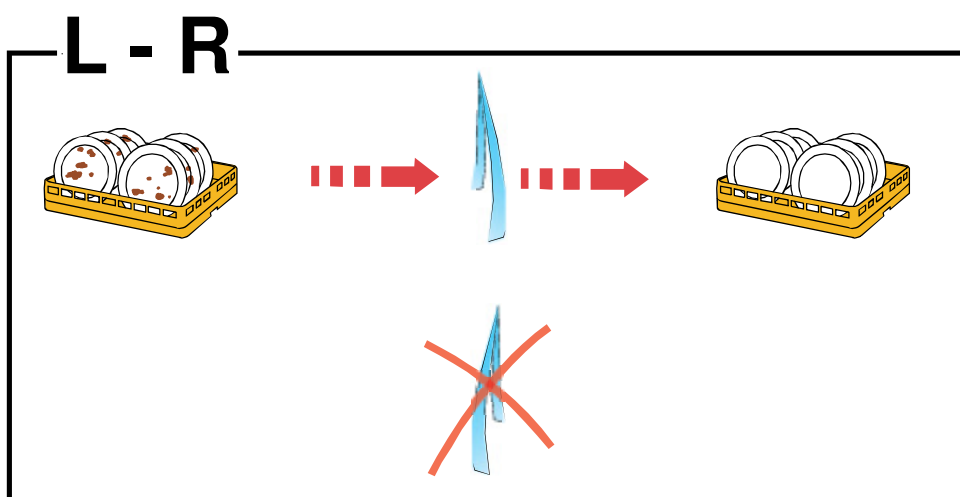
Check:



- That the machine and removable parts have been cleaned. If not – clean them!
- That there is no dirt in the nozzles of the wash arms
- That removable parts are correctly in place
- That the doors of the machine are closed
- That the dishwasher connected has been started up
- That the stopcock for the water to the machine is open (option)
- That the power switch is in the ON position

Curtain placement

The curtains in the machine (4 pcs. per machine) must hang in accordance the image depending on the feed direction.



4.1.4 Filling the machine

NB: The rack conveyor machine must be started.

- Press ON/OFF button (6) to start the machine. The button (6) then illuminates with a faint green light. The tank fills automatically with water from the connected rack conveyor machine. Once the machine is ready for use, the button (6) illuminates with a bright green light.

Filling machines with a separate water connection (option)

- Press ON/OFF button (6) to start the machine. The button (6) then illuminates with a faint green light. The tank fills automatically with water from the separate water connection. Once the machine is ready for use, the button (6) illuminates with a bright green light.

4.2 Using the machine

During operation the machine's tank fills automatically.

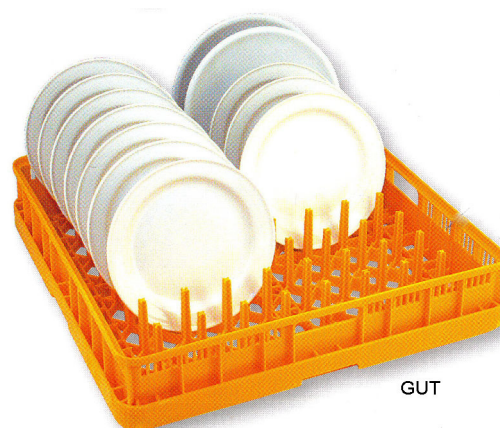


- For optimum results, it is essential to keep the filter (3) clean. Remove the filter and rinse regularly. When the machine is being used intensively, empty it at least twice an hour.
- The rinsing pressure is set in the factory but may be adjusted (see ADJUSTMENT INSTRUCTIONS).

4.2.1 Positioning of dishware in baskets



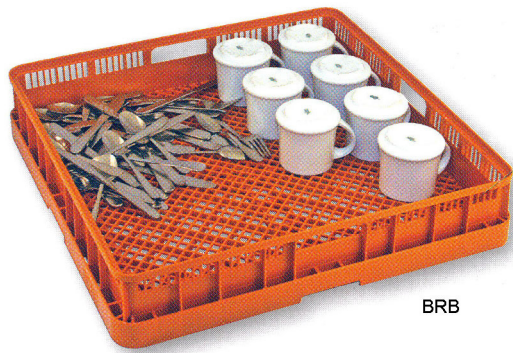
The machine is supplied with washing baskets depending on the equipment level. The washing baskets are used according to the following:



The yellow basket is used for side plates, trays, plates, etc.



The blue basket is used for glasses, cups and canteens



The brown basket is used for cutlery

4.2.2 Pre-rinse

Slide the basket towards the infeed until the feed device hooks the basket and pulls it into the machine and the pre-rinse starts.

4.2.3 Stopping the machine during operation

If the machine needs to be stopped when it is in operation, use the buttons on the control panel. Press the ON/OFF button (6) to turn off the power.

To restart the machine: Press the ON/OFF button (6).

4.3 After use – Cleaning



HACCP is a preventive inspection system to ensure hygiene requirements are met during the washing process and cleaning of the machine. As a result of its design, the machine meets strict hygiene requirements. Regular, thorough cleaning is also important from a hygiene perspective. A machine that is properly cleaned helps produce a good wash result, reduces the risk of dirt accumulating, increases the service life of the machine and reduces the risk of emergency shutdown.



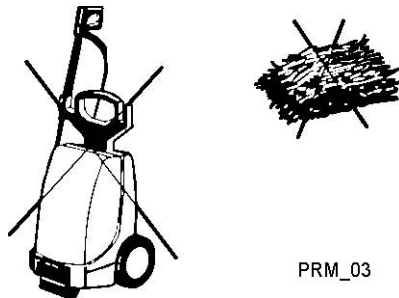
The machine is easiest to clean while it is still warm.

4.3.1 Incorrect cleaning methods



NB: An incorrect cleaning method may damage the machine. The following points must be observed:

- Do NOT use steel wool as it will cause corrosion to form on the machine.
- If detergent is used, it must not contain abrasives. Detergents containing abrasives will damage the stainless steel panels.
- The exterior of the machine must not be hosed. Water can enter the machine and damage the control panel and electrical equipment.
- Pressure washers and steam can damage the machine and must NOT be used for cleaning purposes. Never use a pressure washer to clean the floor within 1 metre of the machine. The supplier cannot be held liable for any faults caused by the use of pressure washers on the machine and any such use may invalidate the warranty. There is a risk of splashing even if the floor is hosed down.



Steel wool and pressure washers must not be used for cleaning

4.3.2 Emptying

- Empty the tank by removing the level pipe (2).

4.3.3 Daily cleaning

Internally

Switch the machine off by pressing the ON/OFF button (6). Take out and clean the level pipe (2), the filter (3) and curtains (5). Check the wash arms' (4) nozzles; if necessary, remove and clean. Rinse out all of the machine's inside surfaces and clean the tank. Use our Cleaning Gun (WD240.9009) for best results.

Rinse cleaning of PRM (option)

NB: Check that the machine is in the ON position.

- Take out the level pipe (2), the filter (3) and the inner curtains (5).
- Close the door (1), wait for the ON/OFF button (6) to illuminate with a faint light, and then wait another 10 seconds.
- Press button (8). The button is activated and a white light appears.
- The inside of the machine will now be cleaned for 3 minutes with hot water. If you want cleaning for 5 minutes, the button (8) must be held in for more than two seconds.
- Switch the machine off by pressing the ON/OFF button (6).
- Take out the outer curtains (5).
- Clean the level pipe, filter and all the curtains (4 pcs.).

Externally

Wipe the outside of the machine with a soft, damp cloth.

4.3.4 Weekly cleaning

Weekly cleaning should be more thorough than daily cleaning.

In addition to the daily cleaning measures, clean the machine as per these instructions:

- Wash arms (4): brush the interior. Also clean the wash arm nozzle.
- Decalcify the machine when necessary.



Cleaning brush WD721.0301

Cleaning PRM with wash tablet (option)



Check with your detergent supplier which washing tablets should be used.

NB: Check that the machine is in the ON position.

- Take out the level pipe (2), the filter (3) and the inner curtains (5).
- Refit the level pipe and close the door (1) after the tank has been emptied. The tank now fills from the connected dishwasher which is turned on. Once the tank is filled, the button (6) illuminates with a bright green light.
- Open the door (1) and put a washing tablet into the tank.
- Close the door (1).
- Press button (8). The button is activated and a white light appears.
- The inside of the machine will now be cleaned for 5 minutes with hot water from the tank. If you want cleaning for 10 minutes, the button (8) must be held in for more than two seconds.
- Switch the machine off by pressing the ON/OFF button (6).
- Take out the level pipe (2) and the outer curtains (5).
- Clean the level pipe, filter and all the curtains (4 pcs).

Operating instructions

4.4 Operating problems

4.4.1 Troubleshooting

The following errors can be dealt with by the operator. If the problem persists, contact authorised service personnel.

PROBLEMS	CAUSE	ACTION
No indication on the control panel display when the control button is pressed.	Power switch off.	Switch on the power switch.
The machine does not fill with water.	The connected machine has not been started up.	Start the connected machine.
	The incoming water stopcock is closed.	Open the tap.
	The door is open.	Close the door.
The machine does not start.	The door is open.	Close the door.
The pump is noisy.	Low water level. Foam in the tank.	Check the level.
The dishware has tipped over in the baskets.	The dishware is incorrectly positioned in the baskets.	Put the dishware in the correct position.
	Light dishware need washing.	Use a net grid to hold the items.
	The upper washing pressure is too high.	Reduce the upper washing pressure in accordance with the chapter ADJUSTMENT INSTRUCTIONS in the service manual.

When you contact service personnel, you will need to provide the following information:

- Machine type and model.
- Machine serial number and date when the machine was installed.
- A brief description of the problem.
- What happened/was being done immediately before the fault occurred?

5. Technical specifications

The manufacturer reserves the right to make changes to the technical data.

TECHNICAL DATA	
Pump motor (kW)	0.75
Tank volume (litres)	30
Weight, machine in operation (WD-PRM60) (kg)	150
Weight, machine in operation (WD-PRM90) (kg)	170
Enclosure protection class (IP)	55

CAPACITY AND OPERATING DATA	
Normal wash capacity (baskets/hour) (pcs) *	285
Max. surface temperature at a room temperature of 20°C (°C)	35
Sound pressure level, LPA (dBA) **	69
Sound power level LWA (dBA) **	83

* Maximum capacity depends on the dishwasher model connected.

** in accordance with EN 60 335-2-58, §ZAA.2.8 with instruments that satisfy class 1.

Measurements of the sound pressure level on site are performed in three places 20 cm from the edges of the front at a height of 1.55 m using a microphone. When measuring sound power level, create an imaginary measurement area consisting of five sides at a distance of 1 m from all edges of the machine.

CONNECTION, MACHINE	
Total connected power (kW)	0.8
Main fuse 400 V 3N~ (A) *	10
Max. connection area 400 V 3N~ (L1-L3, N, PE) Cu (mm ²) **	6

* Other voltages on request.

** 7-metre-long cable included.

Technical specifications

WATER, DRAIN AND VENTILATION CONNECTIONS	
Water connection from dishwasher (Ø mm)	50
Separate water connection (option) (external thread)	R½"
Drain connection, PP pipe (Ø mm)	50
Floor drain, capacity (litres/sec.)	3
Heat load room, sensitive (kW)	1.7
Heat load room, latent (kW)	0.6
Heat load room, total (kW)	2.3

SIZE AND WEIGHT FOR TRANSPORT	
Size (LxWxH (m)) (WD-PRM60) *	1.1 x 0.8 x 2
Size (LxWxH (m)) (WD-PRM90) *	1.4 x 0.95 x 2
Weight (WD-PRM60) (kg) *	155
Weight (WD-PRM90) (kg) *	175

** Including packaging